

Anti-MITF (pS180) Antibody
Rabbit polyclonal antibody to MITF (pS180)
Catalog # AP61064**Specification**

Anti-MITF (pS180) Antibody - Product Information

Application	WB, IHC
Primary Accession	O75030
Other Accession	Q08874
Reactivity	Human, Mouse
Host	Rabbit
Clonality	Polyclonal
Calculated MW	58795

Anti-MITF (pS180) Antibody - Additional Information**Gene ID** 4286**Other Names**

BHLHE32; Microphthalmia-associated transcription factor; Class E basic helix-loop-helix protein 32; bHLHe32

Target/Specificity

Recognizes endogenous levels of MITF (pS180) protein.

DilutionWB~~WB (1/500 - 1/1000), IH (1/50 - 1/100)
IHC~~1:100~500**Format**

Liquid in 0.42% Potassium phosphate, 0.87% Sodium chloride, pH 7.3, 30% glycerol, and 0.09% (W/V) sodium azide.

Storage

Store at -20 °C. Stable for 12 months from date of receipt

Anti-MITF (pS180) Antibody - Protein Information**Name** MITF {ECO:0000303|PubMed:8069297, ECO:0000312|HGNC:HGNC:7105}**Function**

Transcription factor that acts as a master regulator of melanocyte survival and differentiation as well as melanosome biogenesis (PubMed: [10587587](http://www.uniprot.org/citations/10587587) target="_blank">10587587, PubMed: [22647378](http://www.uniprot.org/citations/22647378) target="_blank">22647378, PubMed: [27889061](http://www.uniprot.org/citations/27889061) target="_blank">27889061, PubMed: [9647758](http://www.uniprot.org/citations/9647758) target="_blank">9647758). Binds to M-boxes (5'-TCATGTG-3') and symmetrical DNA sequences (E-boxes) (5'-CACGTG-3') found in the promoter of pigmentation genes, such as

tyrosinase (TYR) (PubMed:10587587, PubMed:22647378, PubMed:27889061, PubMed:9647758). Involved in the cellular response to amino acid availability by acting downstream of MTOR: in the presence of nutrients, MITF phosphorylation by MTOR promotes its inactivation (PubMed:36608670). Upon starvation or lysosomal stress, inhibition of MTOR induces MITF dephosphorylation, resulting in transcription factor activity (PubMed:36608670). Plays an important role in melanocyte development by regulating the expression of tyrosinase (TYR) and tyrosinase-related protein 1 (TYRP1) (PubMed:10587587, PubMed:22647378, PubMed:27889061, PubMed:9647758). Plays a critical role in the differentiation of various cell types, such as neural crest-derived melanocytes, mast cells, osteoclasts and optic cup-derived retinal pigment epithelium (PubMed:10587587, PubMed:22647378, PubMed:27889061, PubMed:9647758).

Cellular Location

Nucleus. Cytoplasm. Lysosome membrane Note=When nutrients are present, recruited to the lysosomal membrane via association with GDP-bound RagC/RRAGC (or RagD/RRAGD): it is then phosphorylated by MTOR (PubMed:23401004, PubMed:36608670) Phosphorylation by MTOR promotes ubiquitination and degradation (PubMed:36608670). Conversely, inhibition of mTORC1, starvation and lysosomal disruption, promotes dephosphorylation and translocation to the nucleus (PubMed:36608670). Phosphorylation by MARK3/cTAK1 promotes association with 14-3-3/YWHA adapters and retention in the cytosol (PubMed:16822840).

Tissue Location

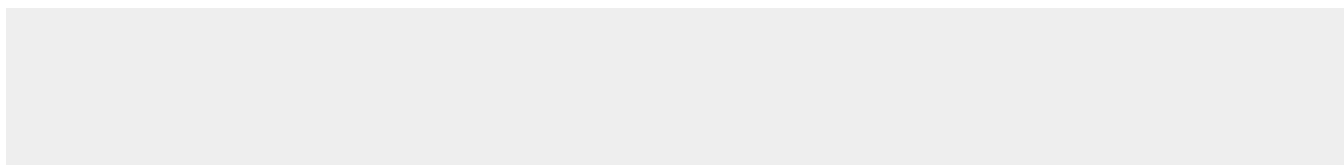
Expressed in melanocytes (at protein level). [Isoform C2]: Expressed in the kidney and retinal pigment epithelium. [Isoform H2]: Expressed in the kidney. [Isoform Mdel]: Expressed in melanocytes.

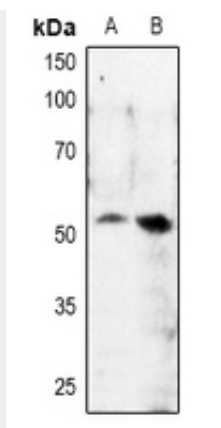
Anti-MITF (pS180) Antibody - Protocols

Provided below are standard protocols that you may find useful for product applications.

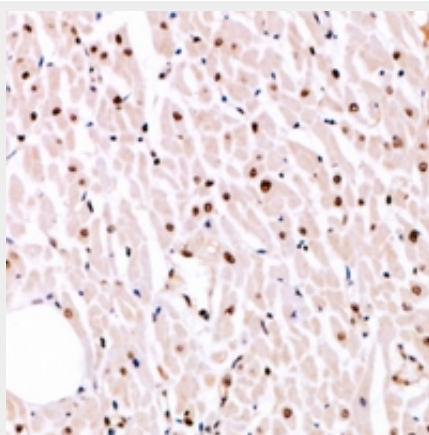
- [Western Blot](#)
- [Blocking Peptides](#)
- [Dot Blot](#)
- [Immunohistochemistry](#)
- [Immunofluorescence](#)
- [Immunoprecipitation](#)
- [Flow Cytometry](#)
- [Cell Culture](#)

Anti-MITF (pS180) Antibody - Images

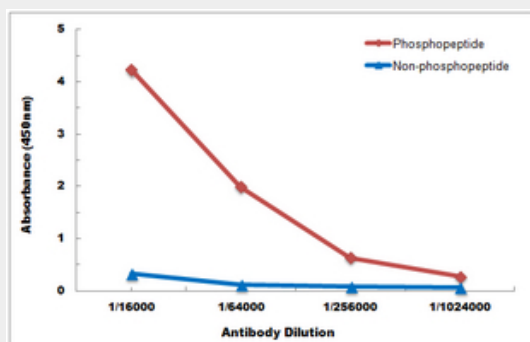




Western blot analysis of MITF (pS180) expression in U87MG (A), A549 (B) whole cell lysates.



Immunohistochemical analysis of MITF (pS180) staining in human heart formalin fixed paraffin embedded tissue section. The section was pre-treated using heat mediated antigen retrieval with sodium citrate buffer (pH 6.0). The section was then incubated with the antibody at room temperature and detected using an HRP conjugated compact polymer system. DAB was used as the chromogen. The section was then counterstained with haematoxylin and mounted with DPX.



Direct ELISA antibody dose-response curve using Anti-MITF (pS180) Antibody. Antigen (phosphopeptide and non-phosphopeptide) concentration is 5 ug/ml. Goat Anti-Rabbit IgG (H&L) - HRP was used as the secondary antibody, and signal was developed by TMB substrate.

Anti-MITF (pS180) Antibody - Background

KLH-conjugated synthetic peptide encompassing a sequence within the center region of human MITF. The exact sequence is proprietary.